

**ZERA**

Software Description

**MTVis**  
Data Visualisation and Management Software





**Please keep for future use.**

Status: 13<sup>th</sup> February 2012

**ZERA**

© Copyright 2012 ZERA GmbH.

ZERA GmbH · Hauptstraße 392 · D-53639 Königswinter

Tel.: +49 (0)2223 704-0 · Fax.: +49 (0)2223 704-70

E-Mail: [info@zera.de](mailto:info@zera.de)

[www.zera.de](http://www.zera.de)

# Table of Contents

# Page

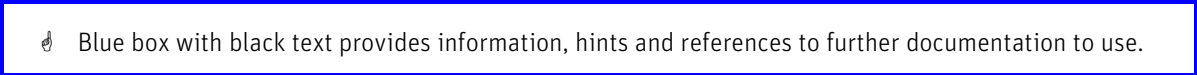
Important User Information .....	5
User Information, Hints, References .....	5
Text Markings.....	5
Description .....	6
General.....	6
General Requirements for Using MTVis.....	6
Tree Structure of Stored Data.....	7
Main Menu.....	8
Symbol Bar.....	9
File.....	10
Edit .....	11
Readout MT3xx Data.....	12
Representation .....	13
Settings and Vectors.....	14
Settings .....	14
Vector Definition.....	15
View.....	15
Applications with MTVis Software .....	16
Data Storage on CF-card (MT3000 / COM3003).....	16
Read out Data from CF-card with MTVis (MT3000 / COM3003).....	16
Read out Data with MTVis (MT3xx) .....	16
Print stored Data .....	16
ID-code Definition to create a New Data File.....	17
Editing an existing Data File .....	17
Delete an existing Data File .....	17
Visualization of stored Data.....	17
Service.....	18



## Important User Information

### User Information, Hints, References

The blue box with black text is used in this manual to provide information, hints and references to further documentation to user.

 Blue box with black text provides information, hints and references to further documentation to use.

### Text Markings

1. Numbers mark activities, which are to be accomplished in the indicated order.
- Hyphens mark general enumerating.

## Description

### General

The MTVis software is designed for visualization the measuring data as well as bi-directional data management between a unit of the MT-series or COM3003 and an external PC.

☞ In the following the abbreviation **MT3xx** is used for the following devices:  
MT300, MT310, MT320, MT365, MT68x, MT78x und MT3000.

### Applications are as follows:

- Visualisation of stored data
- Data transfer from the CF-card to an external PC
- Data transfer from an external PC to the CF-card
- Data transfer from MT3xx to an external PC.
- Editing of customer information data on an external PC
- Creating of backups from the CF-card on an external PC
- Creating and printing of test protocol
- Import and export of Excel files
- Import and export of XML. files

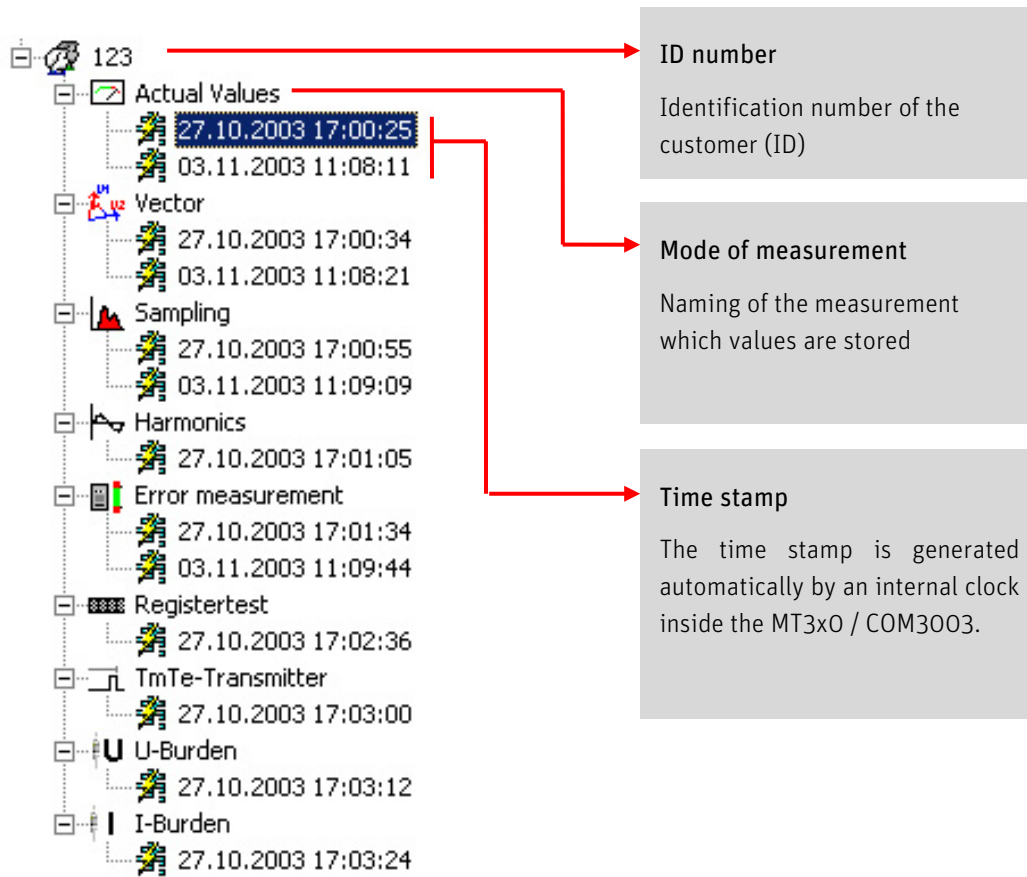
### General Requirements for Using MTVis

- To make sure that all data are readable or storable with the MTVis software, the user must ensure that the folders described in chapter **Settings on page 14** are available on the CF-card \*.
- The user must also ensure, that the path mentioned below is set and the following enumerated required .XML-files are existing: \*
  - \MAIN\MAIN.XML
  - \RESULT\RESULT.XML
- In order to read or write data it is required to insert the CF-card into the CF-card adapter or a comparable device \*.

☞ The MTVis Software is designed for Windows operating systems.  
☞ The following version will be supported: **Windows 98, 2000, NT, XP and 7.**

\* only for MT3000 and COM3003

## Tree Structure of Stored Data

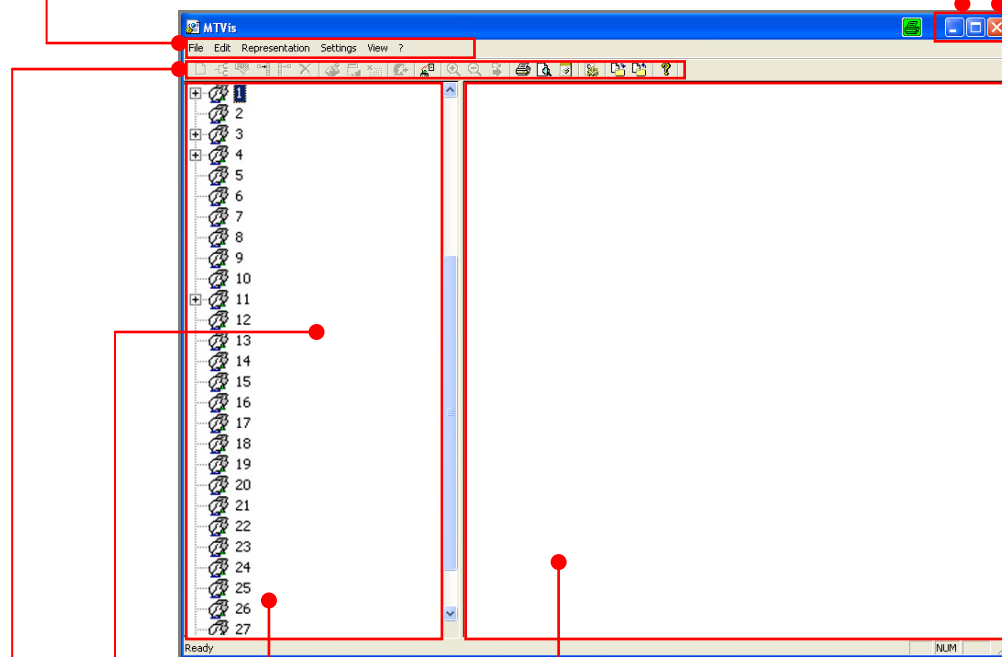


## Main Menu

Main menu bar (see page 10ff)

Minimize/  
Maximize

Quit MTVis



Status bar \*




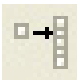

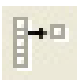












Field to display the measuring  
result data

Field to display the data  
tree on the CF-Card

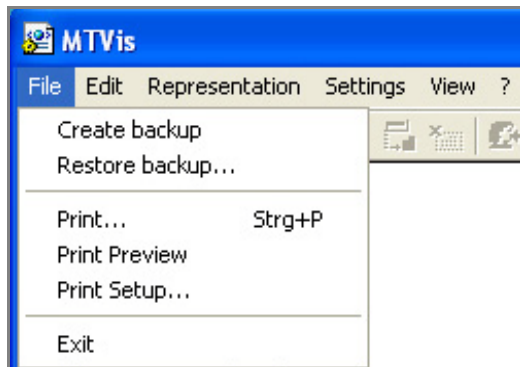
Tool bar \*  
(see next page)

☞ \* Tool- and status bar can be displayed or hidden via menu.

Symbol Bar

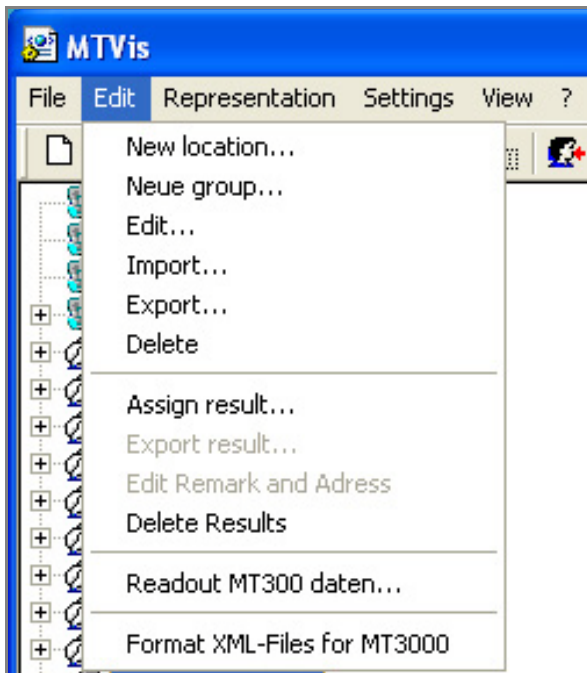
Icon	Meaning	Icon	Meaning
	Create new file		Zoom selected field
	Create new group		Show the whole field
	Edit location or group		Represent actual value
	Import locations from a CSV file		Print
	Export locations in a CSV file		Print preview
	Delete file		Print setup
	Edit remark and adress for a test result		Selection of XML-data and language
	Export results		Create backup
	Delete results		Restore backup
	Assign results		Info about MTVis
	Read out data from MT3xx		

## File



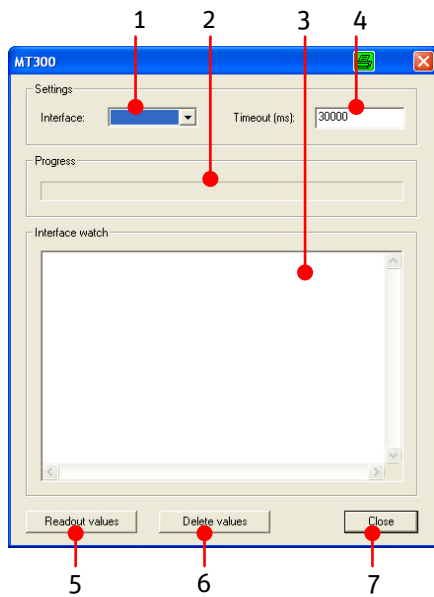
Command	Description
Create backup	This function creates a folder on the hard disk drive, where the MAIN.XML and the RESULT.XML files will be stored. The path of the folder can be selected (see chapter <b>Settings on page 14, point 3</b> ).
Restore backup	With this function a backup can be restored. A window will open and the backup, that is selected, will be stored.
Print	Represented the stored values on a standard printer
Print preview	Shows a preview of the data sheet
Print setup	Opens a window, where the print setup can be performed.
Exit	Exits the MTVis software

Edit



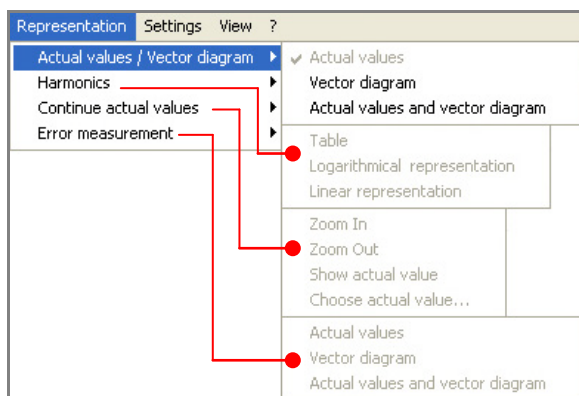
Command	Description
New location	Add a new location
Neue Gruppe	Add a new group
Edit	Edit an existing ID
Import	Import a location of a CSV file
Export	Export a location into CSV file
Delete	Delete an existing ID
Assign results	Assign test results to an existing ID
Export results	Export test result of an existing ID
Edit remark	Edit a remark for a test result.
Delete results	Delete test results conclusively.
Readout MT300 data	Test results can be read out from the MT 3xx. Another window will open (see next page).
Format XML file for MT3000	Test results will be stored as XML-file for MT3000

## Readout MT3xx Data



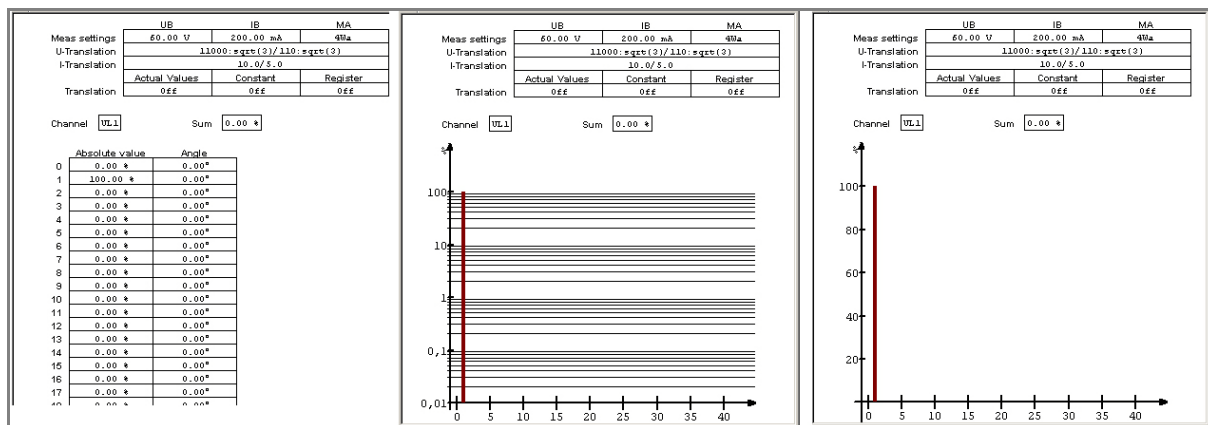
Pos.	Description
1	Select interface (e. g. COM2)
2	Status of data readout
3	Insert timeout period (if the readout cannot be performed, increase the timeout period)
4	Display of readout protocol
5	Start readout
6	Delete results
7	Close window

## Representation



The representation of the stored data can be changed in this menu.

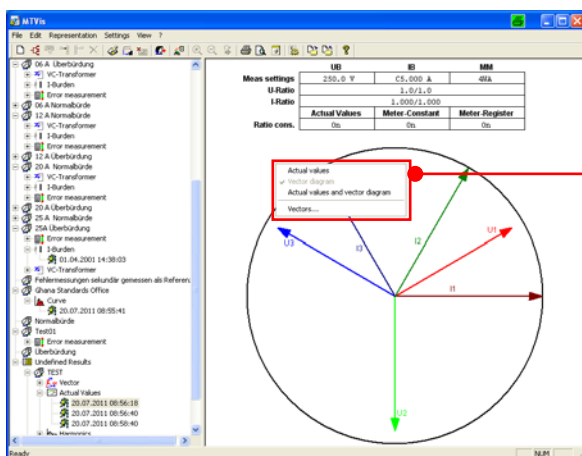
## Examples



Table

Logarithmic diagram

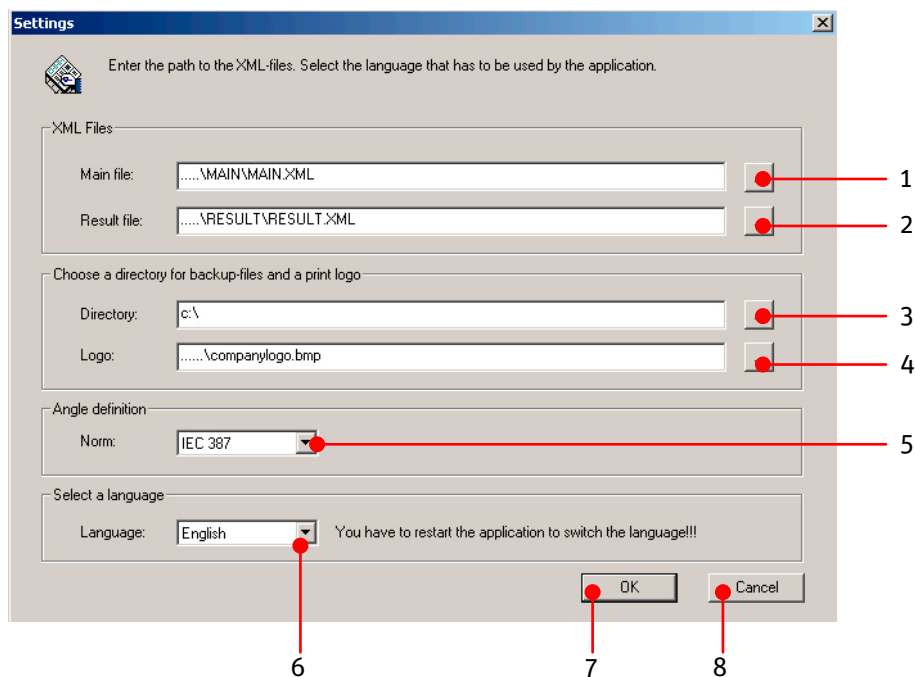
Linear diagram




Press the right mouse button in the representation field and you can select style of representation directly.

## Settings and Vectors

### Settings



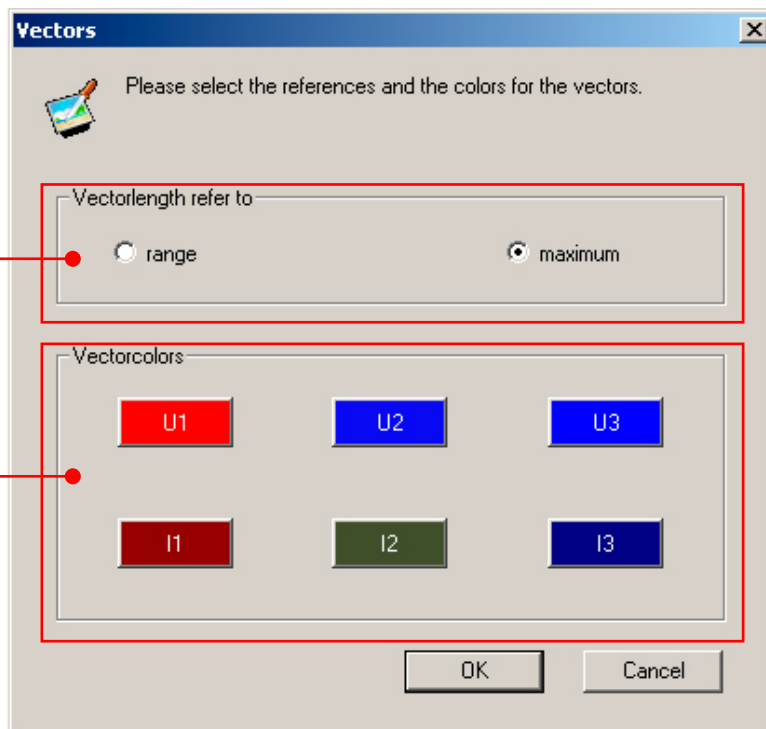
Pos	Description
1	Selection of the path where the MAIN.XML file is located on CF-card
2	Selection of the path where the RESULT.XML file is located on CF-card
3	Selection of the path where the backup files should be stored
4	Selection of the path where the company logo is stored, which should be imaged in the test protocol.*
5	Selection of the type of norm, the phase angle should be represented (IEC387 or DIN410)
6	Selection of the menu language (German, English, Spanish, French or Czech)
7	Confirm your selections with the >OK<-button.
8	Cancel all selections with the >Cancel< button.

 \*Hint: The company logo should be a bitmap file (.bmp). In order to visualize the logo well, it is required to fit it in a dimension of 4 cm x 1.3 cm. In addition the resolution of the logo must agree with the resolution of the printer, which is used for printing of the test protocol.

**Vector Definition**

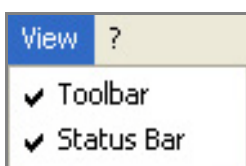


Point of reference for vector representation



Free color selection for each vector


**View**



Select if the toolbar or status bar should be displayed. (see also chapter **Main Menu** on page 8)

## Applications with MTVis Software


### Data Storage on CF-card (MT3000 / COM3003)

 Before a data can be stored on the CF-card, the measurement must be stopped.

#### Operation with MT3000 / COM3003

1. Stop the measurement.
2. Press function key >Store<.
3. Select an existing ID or create a new one (see next page).
4. Press function key >OK<.

### Read out Data from CF-card with MTVis (MT3000 / COM3003)


1. Take the CF-card out of the MT3000 / COM3003 and put it into the CF-card reader.  
**(Attention: The test equipment has to be switched off.)**
2. Start MTVis Software.
3. Click on >Settings< in the menu bar or click on  in the toolbar.
4. Perform the settings of the MAIN.XML and RESULT.XML file. These files are located on the CF-Card, which are shown as a further drive (D/E/F/G.....) . Then click >OK< (see chapter **Settings on page 14**).
5. Select an ID from the data tree (see chapter **Tree Structure on page 7**)




### Read out Data with MTVis (MT3xx)

1. Switch on MT3xx.
2. Connect the MT3xx and an external PC via serial interface cable.
3. Start MTVis software. Select >Edit< in the menu and function >MT300 readout data<. Select the corresponding interface in the next window. Now click on >Readout values<.
4. Now the stored data will be sent to the external PC and converted into an .xml file. This file can be renamed and stored for further editing.

### Print stored Data

1. Select the ID, which stored data of measurement should be printed.
2. Click >Representation< and select the desired mode (if possible), in which way the measured data should be printed (see chapter **Representation on page 13**)

 By pressing the right mouse button, the representation style can be changed

3. Click >File< and select the desired print mode and perform the print setup or click  to print on a standard printer or  for print preview or  to perform the print setup (see chapter **File on page 10**)


## ID-code Definition to create a New Data File

1. Click ›Edit‹ and ›New‹ in the menu bar.
2. Enter a new ID. For a better identification a remark can be inserted.  
In the following masks a lot of information e.g. meter, customer, net and location can be inserted.
3. Confirm all entered data with ›OK‹.

## Editing an existing Data File

1. Select an existing ID, which should be edited.
2. Click ›Edit‹ in the menu bar and then ›Edit‹ in the open menu.
3. Edit the data file.
4. Confirm all entered data with ›OK‹

## Delete an existing Data File

1. Select an existing ID, which you want to delete.
2. Click on . Now you will be asked if you really want to delete this data file. Confirm this question with ›Yes‹ to delete the ID.

## Visualization of stored Data

1. Select the ID, which should be visualized and click to the time stamp.
2. Click ›Representation‹ and select the desired mode, how the measured data should be visualized.  
(see chapter **Representation on page 13**)

- 👉 By pressing the right mouse button, the representation style can be changed.
- 👉 Only visualization modes, displayed in black colour, are selectable.

## Service

If you have technical questions or problems, please contact our service department along with the following information:

- Order number
- Detailed description of the problem

Phone	+49 (0)2223 / 704 - 169
Fax	+49 (0)2223 / 704 - 167
E-mail	<a href="mailto:service@zera.de">service@zera.de</a>